

STANDARD

LMC-Couplings offers HRRK swage ferrules for the assembly of rubber hoses and HRP swage ferrules to assemble PTFE hoses.

OPERATION

HRRK swage ferrules

HRRK ferrules are swaged on rubber hoses using serrated hose couplings with collar. The HRRK ferrule is first placed around the top of the rubber hose and the hose shank with collar is inserted into the hose afterwards. The hose assembly is then placed in the swaging machine and the ferrule is crimped radially. The ferrule penetrates the hose wall, providing a 360° uninterrupted compression band around the hose.

HRP swage ferrules

Compared with rubber hoses PTFE hoses are physically harder. HRP swage ferrules are used to swage smooth hose couplings with collar. The swaging process is similar to that of HRRK swage ferrules. When swaging HRP ferrules, the PTFE hose, the HRP ferrule and the smooth hose shank are pressed together.

The result is a smooth, hygienic hose coupling connection.

FEATURES

LMC's swage ferrules are designed to ensure long-term quality, hygiene and safety.



1. The smooth hose-coupling connection created by the swage ferrule prevents bacterial growth
2. Ferrules are specially designed to eliminate the risk of hose damage
3. Ferrule thickness ensures optimum crimping with no distortion, thus reducing the risk of disconnection
4. The internal surface of HRRK swage ferrules is similar to the grooved internal surface of RK safety clamps



APPLICATION

HRRK swage ferrules

HRRK swage ferrules are used for the assembly of rubber hose assemblies from ND 13 up to ND 100.

HRP swage ferrules

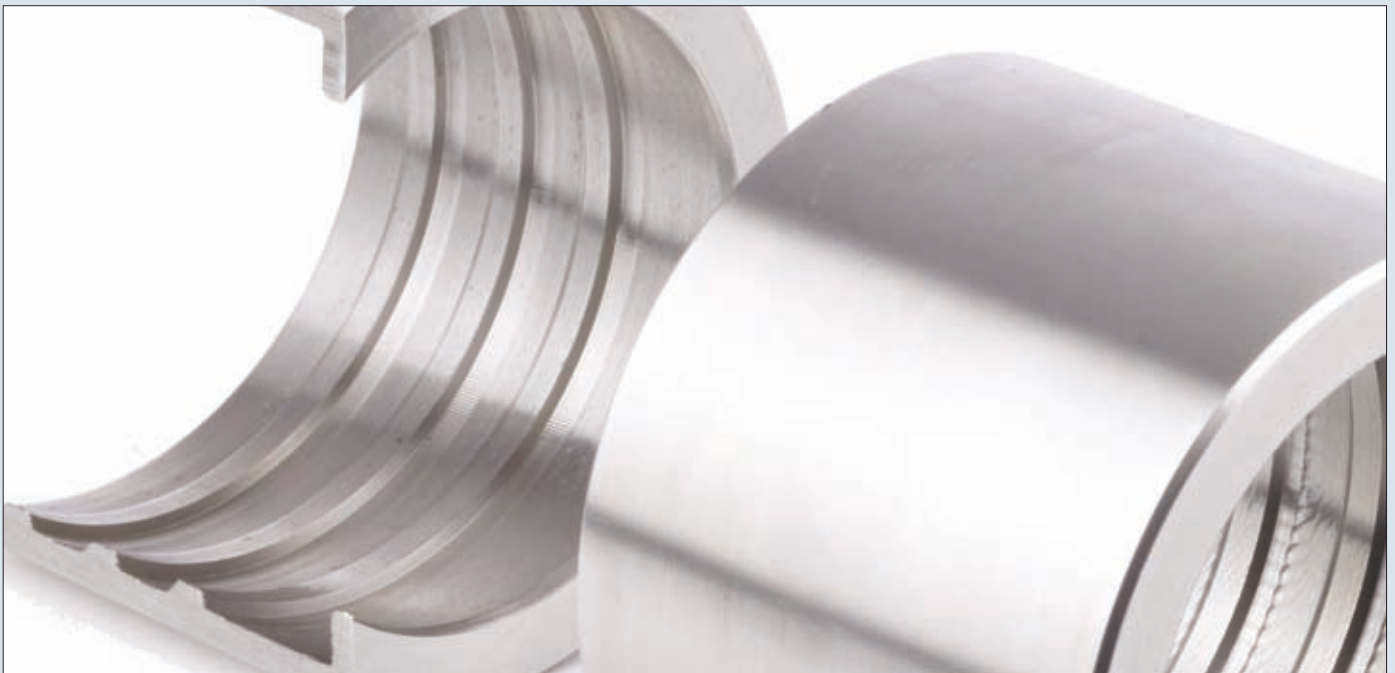
HRP swage ferrules are used for the assembly of PTFE hoses. From ND 6 up to ND 100.

WORKING PRESSURE

16 bar / 230 psi

MATERIAL

Stainless steel AISI 316 / EN 1.4401

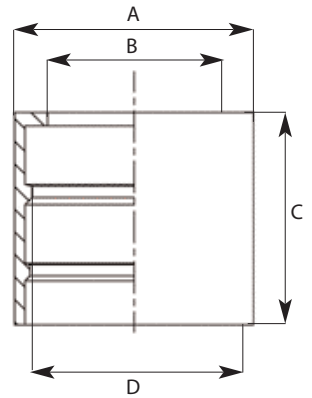


SWAGE FERRULES



HRRK SWAGE FERRULES FOR RUBBER HOSES

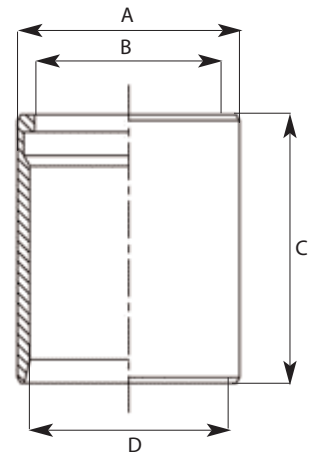
ND	Inch	Hose	Hose min	Hose max	A mm	B mm	C mm	D mm	Weight/pc kg	Reference
15	1/2'	13 x 4	20.7	22.2	28.5	20.5	42.0	22.2	0.06	HRRK013040
15	1/2'	15 x 5	22.7	24.2	31.4	20.5	42.0	24.2	0.04	HRRK015050
20	3/4'	20 x 6	30.9	32.4	39.8	27.7	42.0	32.4	0.10	HRRK020060
25	1'	25 x 7	39.1	40.6	47.5	34.4	42.2	40.6	0.12	HRRK025070
32	1.1/4'	32 x 6	43.9	45.4	52.0	40.7	42.0	45.4	0.13	HRRK032060
32	1.1/4'	32 x 8	48.4	49.9	58.1	42.2	42.0	49.9	0.18	HRRK032080
38	1.1/2'	38 x 6.5	51.8	53.3	60.0	47.1	44.5	53.3	0.19	HRRK038065
38	1.1/2'	38 x 9	56.6	58.1	67.5	48.9	47.5	58.1	0.26	HRRK038090
50	2'	50 x 6.5	63.0	64.5	72.7	59.6	60.0	64.5	0.33	HRRK050065
50	2'	50 x 8	66.4	67.9	77.0	60.7	60.0	67.9	0.39	HRRK050080
50	2'	50 x 11	73.1	74.6	86.0	62.9	60.0	74.6	0.55	HRRK050110
65	2.1/2'	65 x 8	81.4	82.9	93.0	74.7	70.0	82.9	0.55	HRRK065080
65	2.1/2'	65 x 12	90.3	91.8	104.0	77.6	70.0	91.8	0.66	HRRK065120
80	3'	75 x 8	91.4	92.9	102.7	86.7	83.0	92.9	0.70	HRRK075080
80	3'	75 x 12	100.3	101.8	114.0	89.6	83.0	101.8	1.05	HRRK075120
100	4'	100 x 10	120.9	122.4	135.0	113.2	99.0	122.4	1.47	HRRK100100
100	4'	100 x 16	134.3	135.8	150.0	117.6	99.0	135.8	1.47	HRRK100160



HRRK swage ferrules: stainless steel AISI 316 / EN 1.4401
 Steel HSRK swage ferrules on request available.
 Other dimensions available on request.
 Assembly: HRRK swage ferrules are recommended for the assembly of rubber hoses.

HRP SWAGE FERRULES FOR PTFE HOSES

ND	Inch	A mm	B mm	C mm	D mm	Weight/pc kg	Reference
6	1/4'	15.0	11.3	33.6	10.2	0.02	HRP06
8	5/16'	17.9	14.0	35.2	14.3	0.02	HRP08
10	3/8'	19.9	14.2	35.2	16.3	0.03	HRP10
12	1/2'	23.6	19.2	43.0	18.7	0.05	HRP12
16	5/8'	28.3	20.8	45.1	23.9	0.06	HRP16
20	3/4'	31.5	26.3	43.55	27.0	0.07	HRP20
25	1'	38.1	32.3	46.0	33.9	0.08	HRP25
32	1.1/4'	48.5	39.3	46.0	41.0	0.16	HRP32
40	1.1/2'	52.0	45.5	46.0	45.8	0.18	HRP38
50	2'	65.0	58.4	51.4	59.5	0.20	HRP50
65	2.1/2'	81.0	73.2	68.0	72.5	0.51	HRP63
80	3'	93.7	85.1	70.0	85.1	0.61	HRP75
100	4'	119.9	112.0	103.2	111.0	0.84	HRP100



HRP swage ferrules: stainless steel AISI 316 / EN 1.4401
 Other dimensions available on request
 Assembly: HRP swage ferrules are recommended for the assembly of PTFE hoses.

